

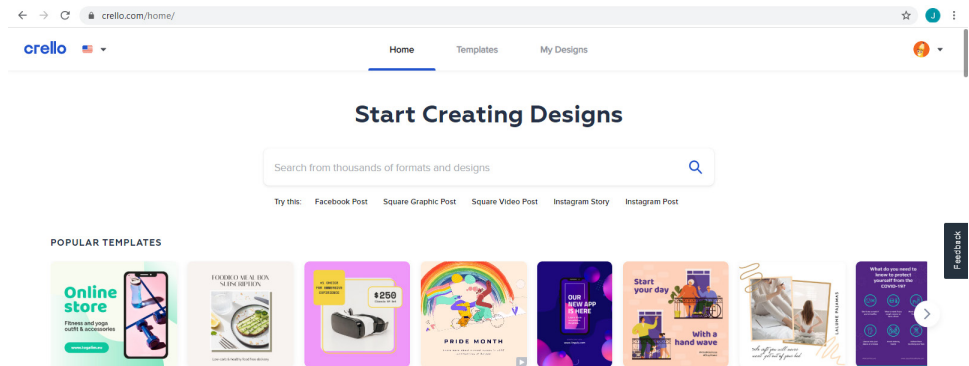
Using Crello, GO Templates and GO ET-DS

How to use Crello Design Software and Graphics One product templates for sublimation

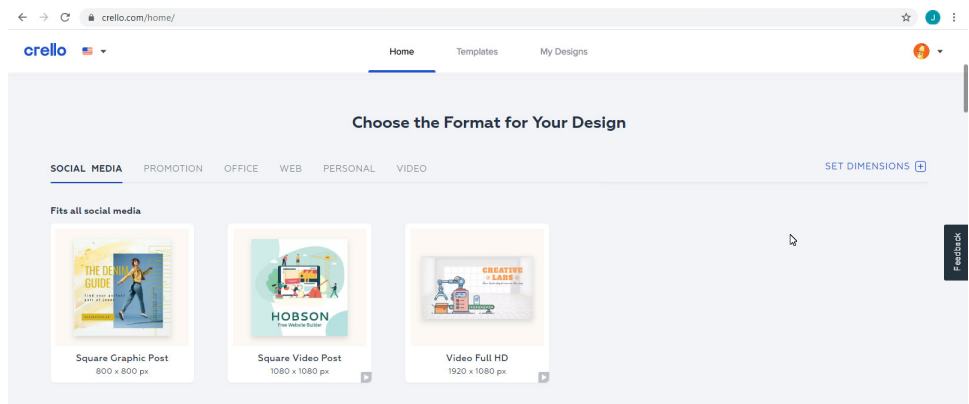
This bulletin describes the procedure on using Crello Design Software and a template for sublimation applications.

Note: Crello for Desktop is used for this document. For Crello Mobile is a separate document

1. Open Crello from your web browser. <https://crello.com>

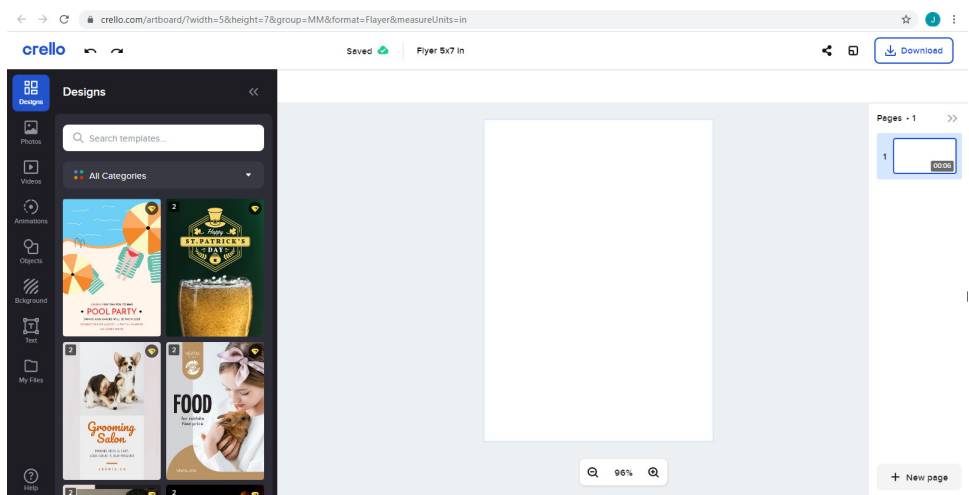


Choose the Design Format

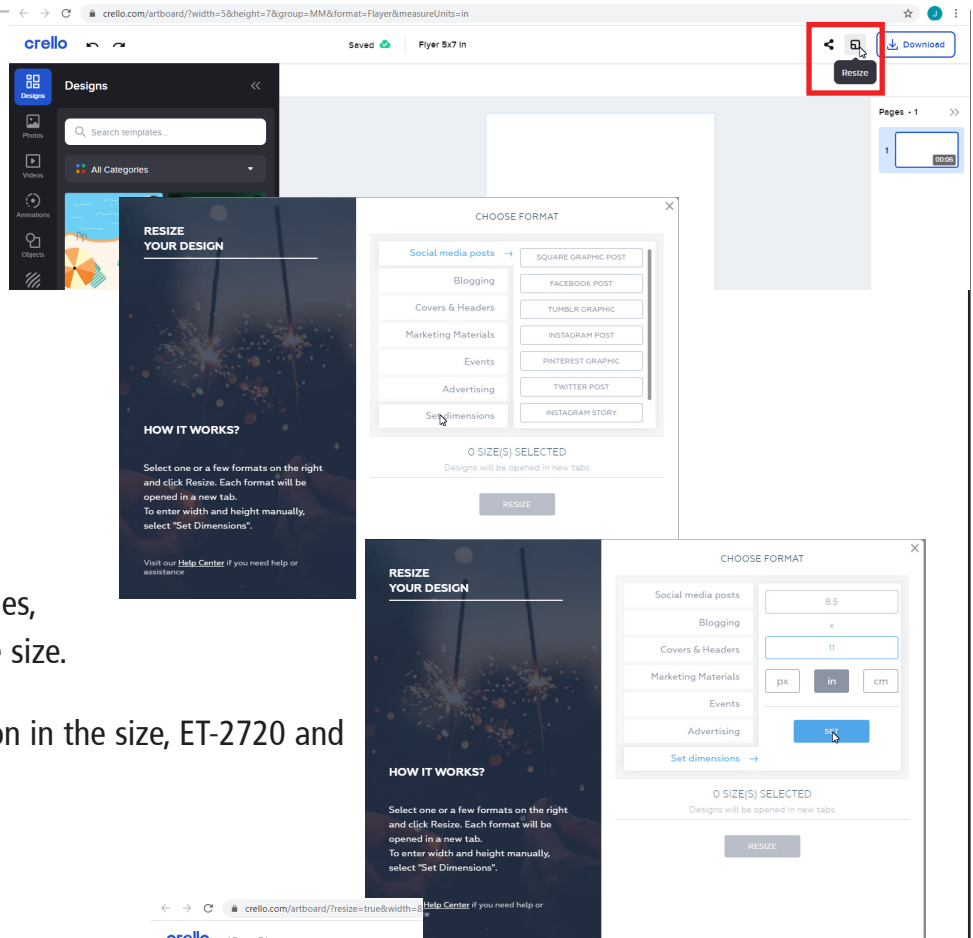


The design page will be created.

In the Left side of the page you can see the elements tools, that can be used to select new elements for your design.



In the upper right are you will find the Reziqe Icon. Select it to change the size of your design page.



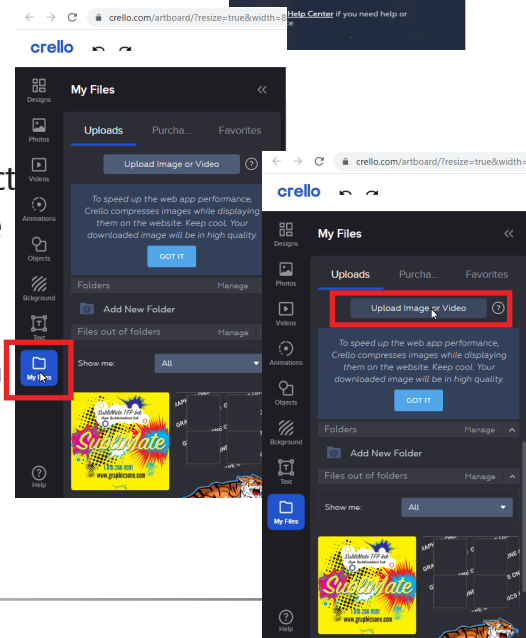
Set your page dimensions.

You can select between Inches, Centimeters or Pixels for the size.

Note: There are no restriction in the size, ET-2720 and ET-15000 sizes can be used.

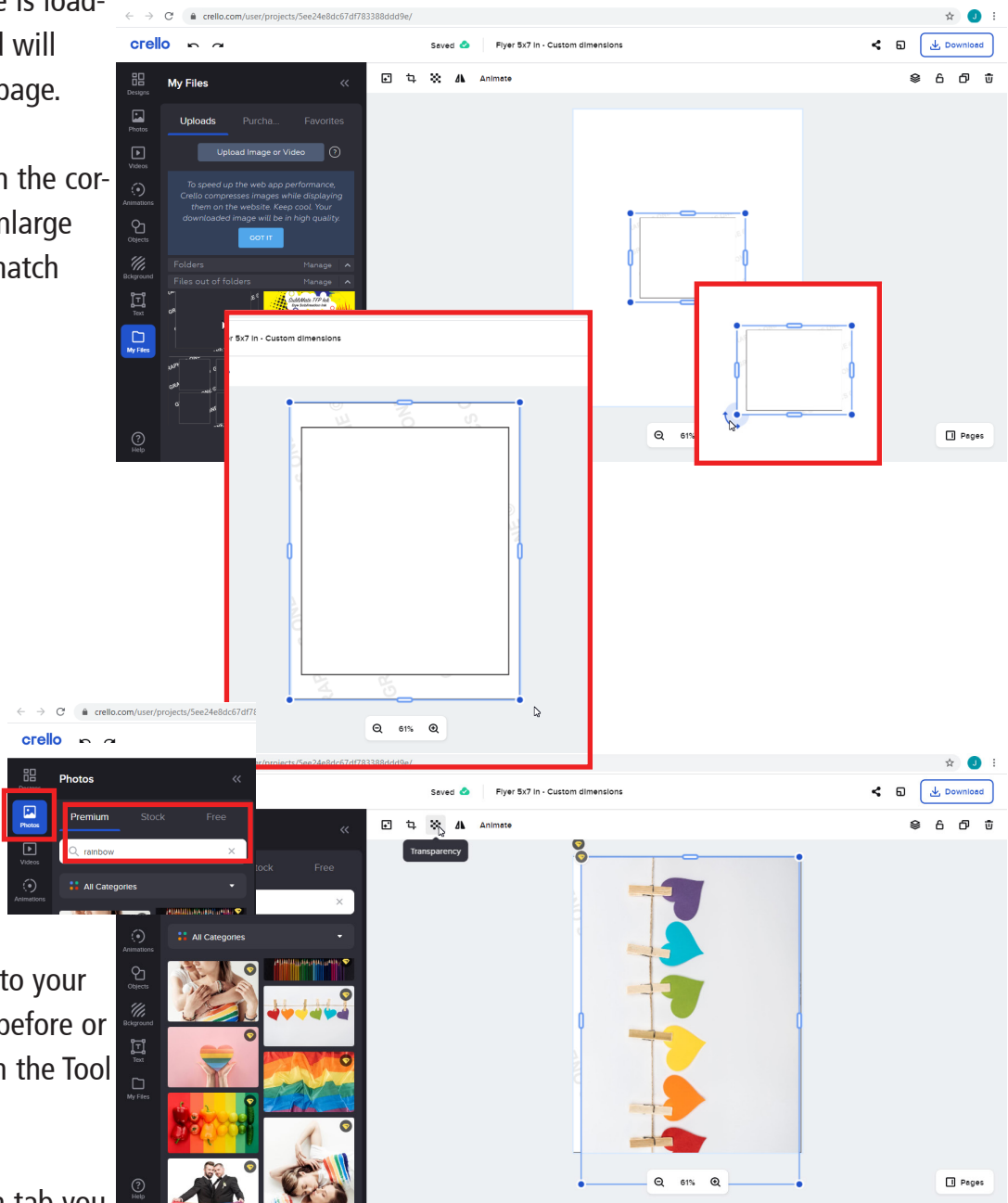
In the Tool bar located at the left, select My Files and then upload the Template fo the product you want to create.

The file browser will open and you can select your the file.



Once the Template is loaded, click on it, and will show up on your page.

With the arrows in the corners, rotate and enlarge the template, to match your page.



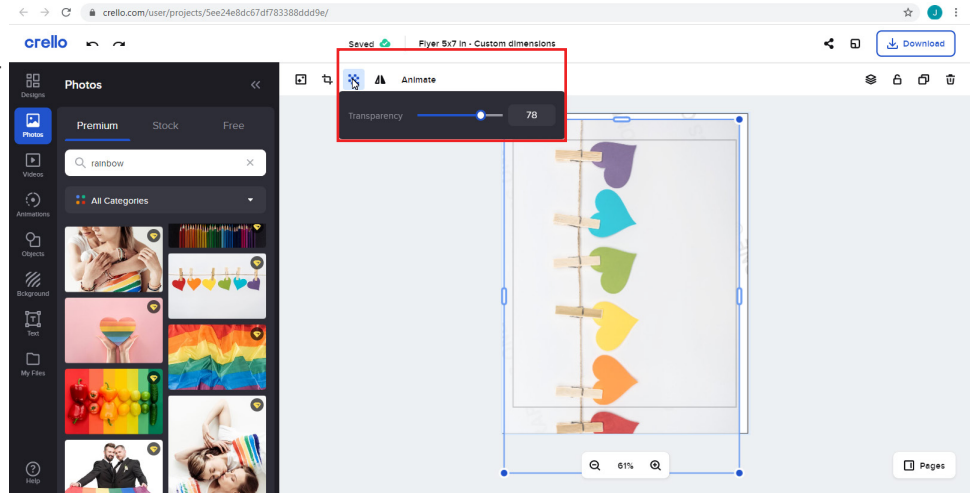
You can insert your own images to your design as we did before or select Photos from the Tool Bar.

From the premium tab you have access millions of images included in your subscription.

Search your image and as soon as you click on it, will appear on top of the template

Use the transparency tool so the Template can be visible and you can place it on the correct position.

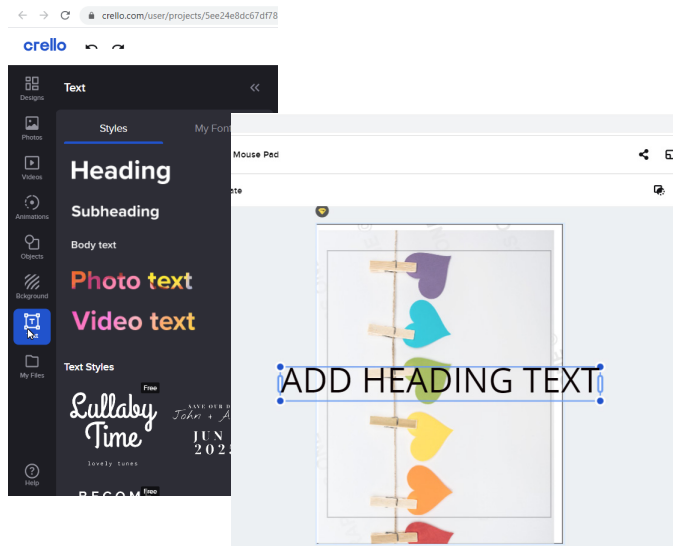
Note: Is a good practice to overlap the design over the template, this way on the transfer process, no white borders show up in the product.



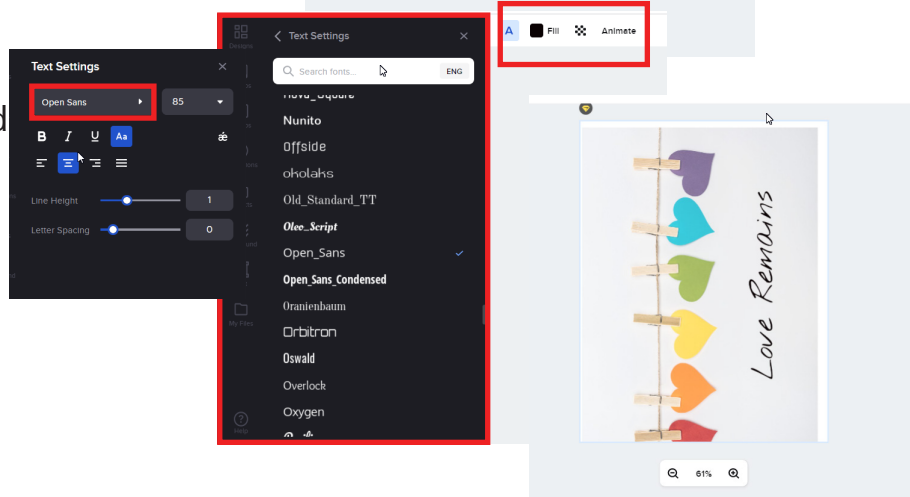
Use the Text tool in the Tool bar to add a text to your design.

It can be your own text or you can use any of the text template available.

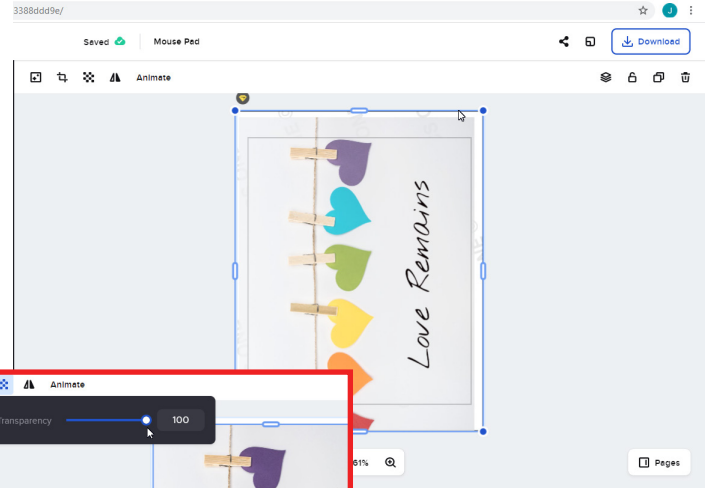
You can customize the text you insert



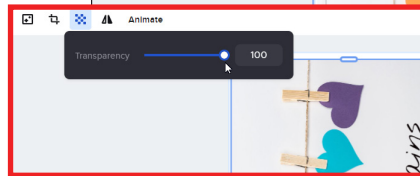
Select the font, color, size and place your text. Text can be rotated as needed



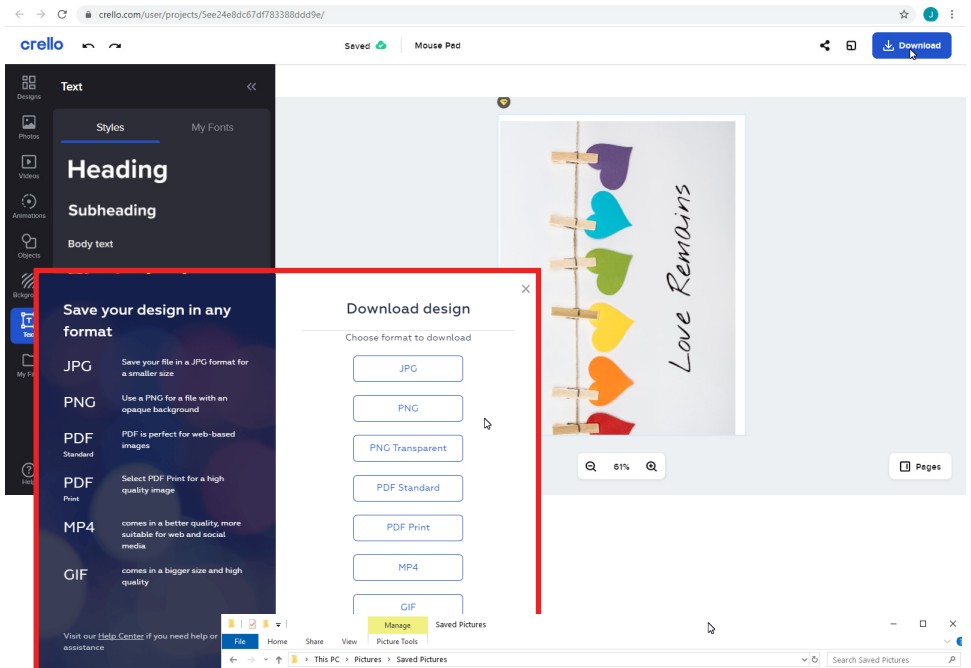
If the design is ready, click on the template and delete it. We dont need it for our final print.



Use the transparency tool and set it up to 100 in order to have the image in full color.



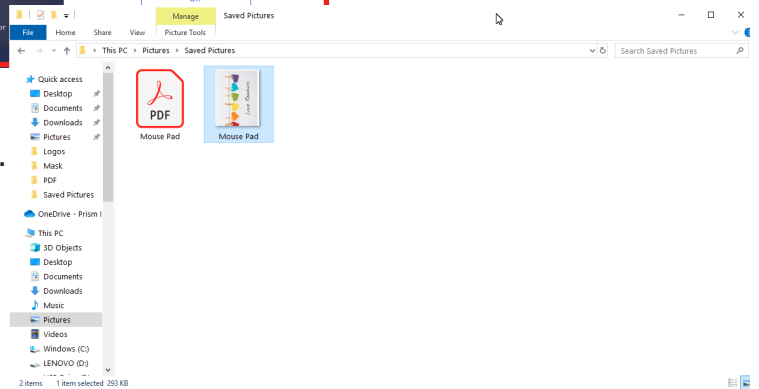
Use the Download button to download your file.



PNG, JPG, PDF are options to download your design.

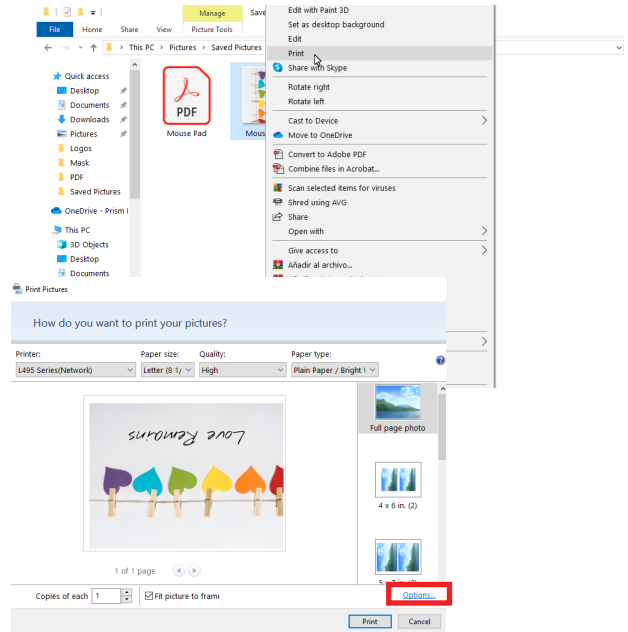
If you want to use an ICC color profile, we recommend PNG or JPG

Save your Design in your computer hard drive.



2. Print your file.

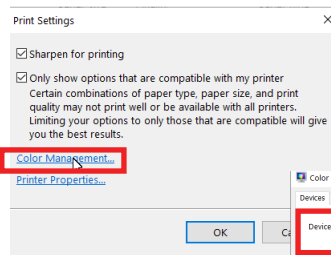
Right Click on your image and select Print.



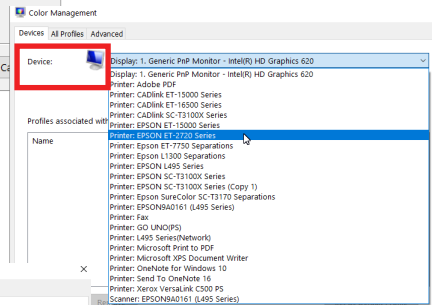
A new window will open with the image preview.

Click on Options

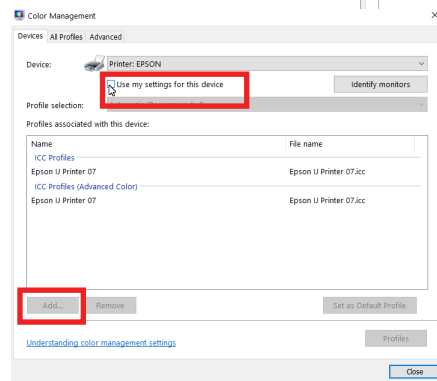
In the Options window you can choose your color profile and the printer settings.



Click on "Color Management" and select your Printer from the Device dropdown list.

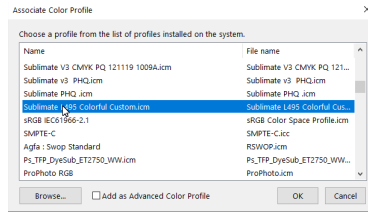


Click on "Use my settings for this device" and the click on

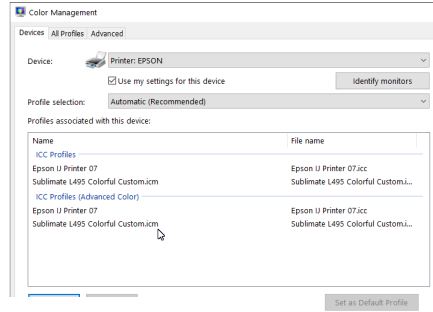


for this "Add"

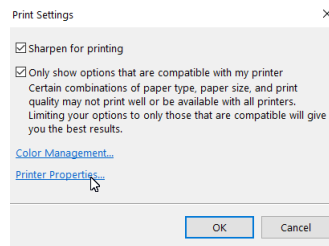
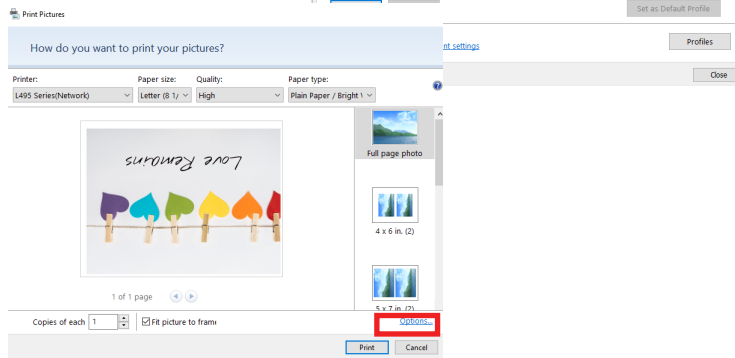
Select the SubliMate™ ICC Profile for your pinter.



You will see the ICC Profile linked to your Device (Printer). Click on Close.

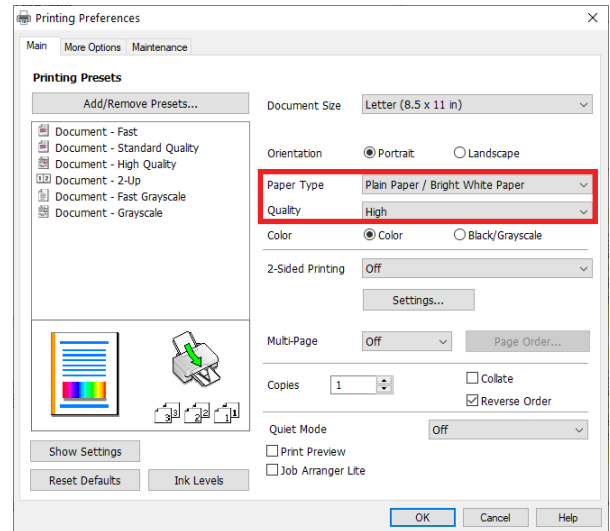


Select Options again to change your Printer Properties.

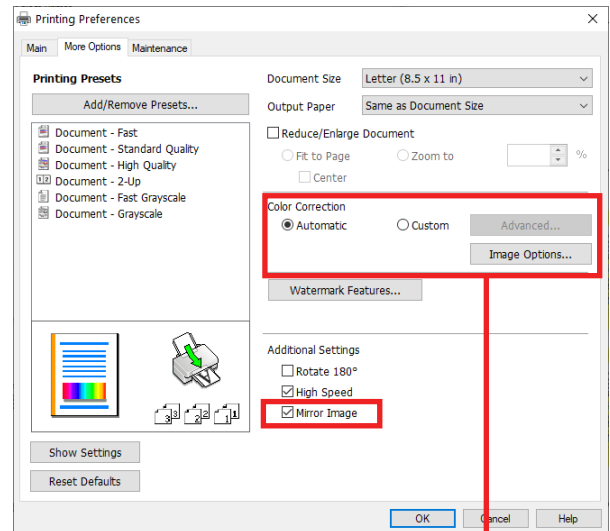


In the driver settings, choose you Paper Size.

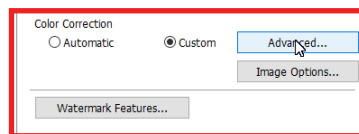
Recommended settings for paper and quality are:
Plain Paper / Bright White Paper
High



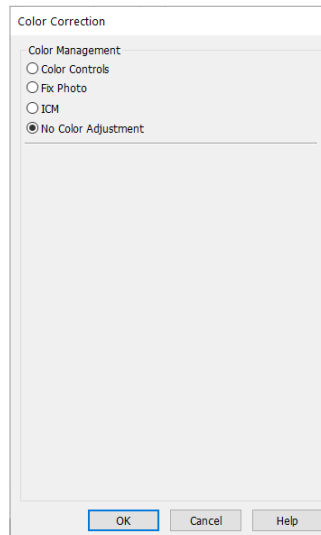
Go to the **More Options** Tab, Mirror Image need to be selected.



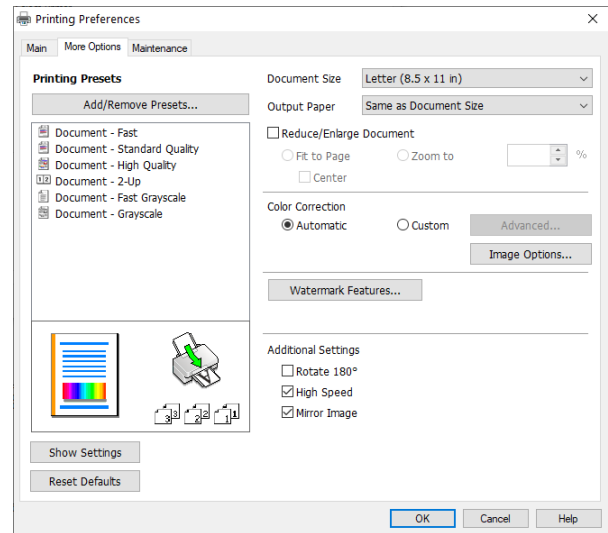
In Color Correction Select **Custom** and click on **Advance**



Select **No Color Adjustment** and click **OK**



Press **OK**. The Previous window will appear.



Click on **Print** and your Image will be send to the Printer.
Now you can transfer to your substrate.

